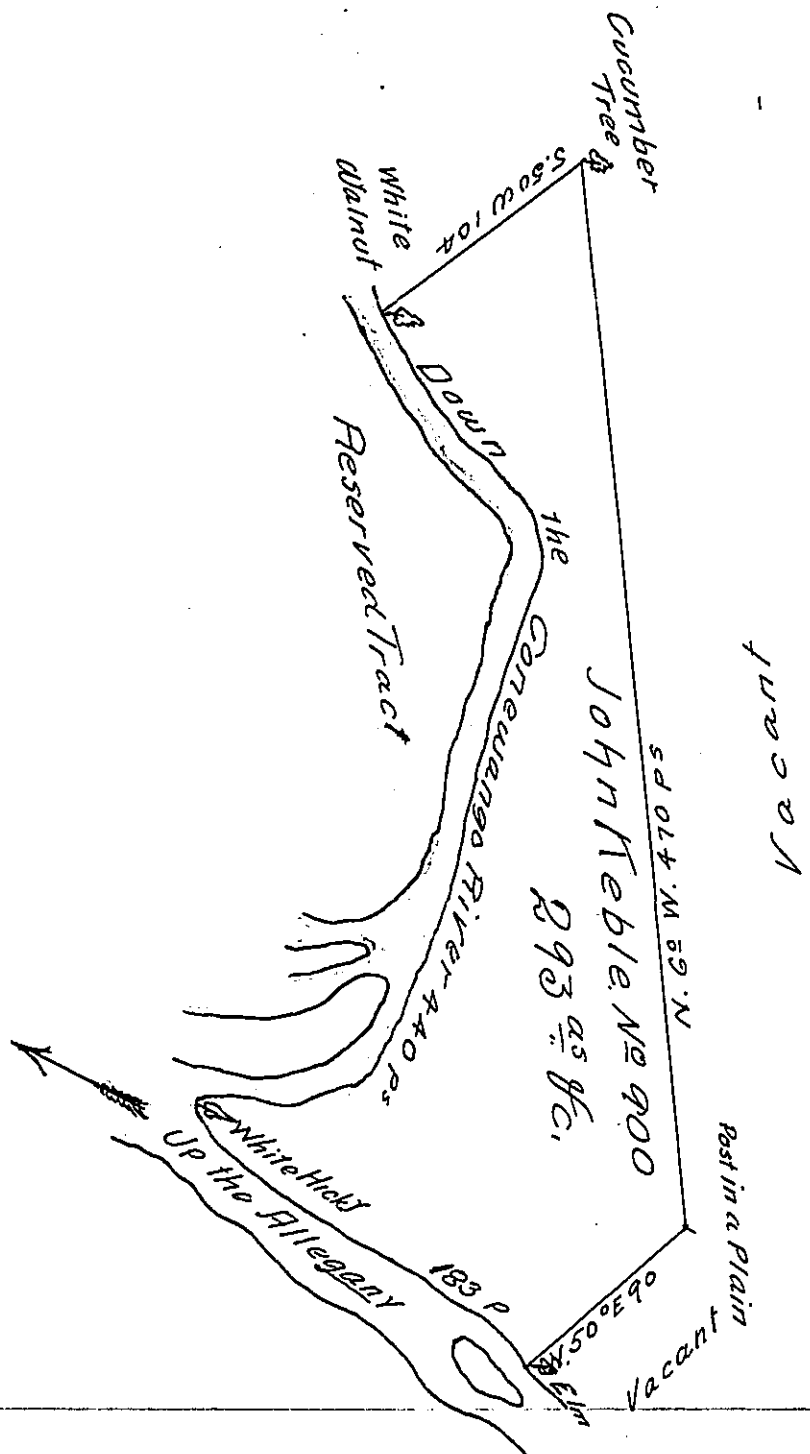


Courses and distances down the Conewango  
 of up the Allegany Rivers beginning at the White Walnut

529. E 42 - 543 E 69 - 515 W 178 - 525 W 82 - 569 W 44  
 N 65 W 23 to White Hick. - 524 E 14 - 544 E 48 - 53 E 18  
 556 E 82 - 542 E 21 to an Elm.



A Draught of a Tract of Land called City Tract. situate in  
 the Forks of the Allegany and Conewango Rivers in Allegany  
 County surveyed the 19<sup>th</sup> day of July 1790 for John Heble in purs-  
 uance of a Warrant Numbered Nine Hundred bearing date the  
 2<sup>nd</sup> day of March 1789. Containing two hundred and ninety  
 three acres and the usual allowance for Roads &c.

James Hamilton D.S.

To Daniel Brodhead Esq<sup>r</sup>  
 Surveyor General.

of District No. 4

IN TESTIMONY that the above is a copy of the original remaining on file in  
 the Department of Internal Affairs of Pennsylvania, made  
 conformably to an Act of Assembly approved the 16<sup>th</sup> day of  
 February, 1833, I have hereunto set my Hand and caused  
 the Seal of said Department to be affixed at Harrisburg,  
 this thirteenth day of July 1905

*Isaac P. Brown*  
 Secretary of Internal Affairs.